

# IMPERMEABILIZZAZIONI ATIPICHE ZETAERRE

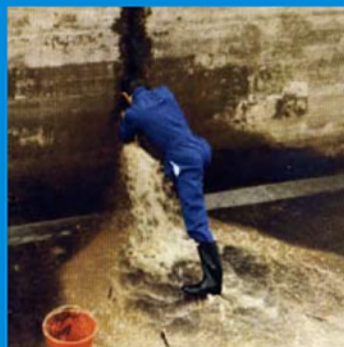
## C.P.S. WATERPROOF CEMENT FAST GRIP

### FEATURES

The compound cementitious waterproof rigid tenders taken C.P.S. has then the property of instantly sealing the negative pressures of water of outer flap (counterforce), even in the presence of stagnant water.

### QUICK TAKE

- With warm temperatures: 30/60 seconds
- In very cold weather: 2/3 minutes
- In case of very cold temperatures using hot water + 18/20 ° C



## PRIMUR WATERPROOF CEMENT SETTING SEMI RAPID

### FEATURES

The compound cementitious waterproof rigid socket semi rapid PRIMUR has the property to lock the **moisture** in counterforce.

It is also used for the containment of water.

### QUICK TAKE

- With warm temperatures: about 30 minutes
- With cold temperatures: about 90/120 minutes



## C.Q.S. WATERPROOF CEMENT SLOW-SETTING

### FEATURES

The compound cementitious waterproof rigid slow-setting C.Q.S. then the property has to coat the artifacts to contain even drinking water.

### QUICK TAKE

- With warm temperatures: 4/5 hours
- With cold temperatures: 12/18 hours



## ZETALASTIC FLEXIBLE WATERPROOF CEMENT / ELASTIC

see brochure ZETALASTIC



# PROCEDIMENTO PER L'IMPERMEABILIZZAZIONE

## Tamponamento con C.P.S. + Antiumidido con PRIMUR +

### SURFACE PREPARATION

- Remove the plaster, coatings and various parts of the surface inconsistent.
- Thoroughly clean the edges of holes, cracks, crawl spaces, etc. ..
- Perform a "V-groove" at the cracks, and the junction between walls and floors, construction joints, the mortar between the bricks, etc. .. cm for a depth of approximately 2/3 (not dovetail).
- Cut strips, spacers, etc. .. for a depth of approximately 2 cm.
- Cut the pieces of wood, etc. .. to a depth of approximately 5 cm.
- Thoroughly clean the surface and rinse thoroughly with clean water.
- In the absence of direct filtration of water saturate the points to be backed up.



Backup with C.P.S. (pill)



### INSTALLATION

- Use rubber gloves + dust mask.
- Mix in small doses C.P.S. with water (dose: 2 vol. CPS + 1 vol. clean water).
- Wait a few seconds until the beginning of the socket.
- Gather the dough with your hands.
- Shape the dough into a cone shape (pill).
- Press the dough (pill) firmly into the hole / crack for a few seconds until it starts to harden.
- For filtering extended, repeat the operation several times until completotamponamento of any loss.

The filtration of water are sealed perfectly in a few seconds (even underwater).



Infill strip, cracks, joints, etc. ..



Brush application should PRIMUR

- If necessary you can check for proper sealing of filtration through the application of massage and a handful of C.P.S. powder.
- After all buffered filtration of water with C.P.S. mixed (pill) will proceed to waterproof any small losses caused by porosity of the surface:

1. PRIMUR mix with clean water (dose: 3 vol. PRIMUR + 1 vol. around water);
  2. apply with a brush the first coat of PRIMUR and let it harden (60/120 minutes);
  3. spread to brush off the dust C.P.S. on PRIMUR, massage vigorously on making small losses more powder if necessary, until completely dry.
- All small losses nn will be sealed with the application of the powder C.P.S. will have to be re-opened and sealed with the C.P.S. mixed (water pill).
4. applied with a brush on the powder alone PRIMUR the PSC moistened;
  5. let it harden and apply the second coat of PRIMUR, it pours;
  6. allow to dry for at least 48 hours.



PRIMUR + C.P.S. powder



PRIMUR + C.P.S. powder



PRIMUR to brush

- CONSUMPTION:**
- C.P.S. kg m 3. linear joints / cracks (2 cm x 2 cm depth approximately).
  - C.P.S. 0.3 kg per hole (3 cm x 2 d iprofondità about - Aluminum Spacers).
  - PRIMUR and C.Q.S. 1.5 kg / m 2 approximately.
  - C.P.S. powder, depending on the size and number of losses.



# ABILIZZAZIONE IN CONTROSPINTA

## + Abbinamento con ZETALASTIC armato

The C.P.S. and the PRIMUR create a perfectly dry surface to be considered "rigid."

In case you have limited but possible structural movements of the acreage, we recommend the further application of the product Zetalastic armed as follows:

a) coating the high wear only with a strip (cm 15/20 approximately) of Zetalastic concrete (perimeter junction between wall and floor, predisposed joints, etc. ..)

b) takes the floor + plinth with a full course of Zetalastic armed with ARMATEX ZR (see brochure Zetalastic).



Pose tissue ARMATEX ZR



Soaking fabric



Final hand

## WATERPROOFING A CONTAINMENT

with C.Q.S. slow-setting (alternative: PRIMUR with quick-setting seeds)

### SURFACE PREPARATION AND INSTALLATION

- Clean and wash the surface;
- Seal holes, cracks, crawl spaces, etc. .. with C.P.S. mixed;
- Mix the C. Q. S. with clean water (dose: 3 vol. CQS + 1 vol. around water);
- Moisten the surface to apply the first coat of CQS a brush;
- Allow to dry (approximately 24 hours);
- Dampen first-hand and apply a second coat of CQS a brush (like the first);
- Allow to dry (approximately 48 hours) and enter water in the basin.



Riv. internal purifier



C.Q.S. - Riv. External bath extinguishers



C.Q.S. + Strips ZETALASTIC armed

### GENERAL FEATURES

Fit perfectly in the wet. Applicable to +5 ° C.

Non-toxic. They do not contain additives accelerators.

Concentrazioni resistant to acid / basic limited: pH 5.5 to about 8.5.

**PACKAGING:** inner plastic buckets with lots of kg. And 10 kg. 25 (excluding ZETALASTIC)

**STORAGE:** 36 months in original packaging guaranteed - sensitive to moisture

**CLASSIFICATION:** cement compounds in powder form - Irritants: Xi

**HANDLING:** Use gloves + goggles + dust mask

**TRANSPORTATION:** cement dust is not hazardous - non-flammable