

ZETALASTIC

Cement flexible / elastic universal

For waterproofing surfaces also damaged and structural movements



Waterproofing terraces



Coating pools



Wall cladding



Flexibility ZELASTIC armed with ARMATEX ZR

FEATURES:

Compound cement based waterproofing vinyl resins suitably treated.

Siottiene mixing the polverete **ZETAFLEX** with the liquid emulsion **ZETALATTEX**.

Excellent adhesion on any media too wet.

Non-toxic, non-contaminant ecoloruri or harmful salts.

Partially permeable to water.

Always riprendibile years later.

Dark gray in color that contantto with water tends to lighten.

The **ZETALASTIC** can be reinforced and reinforced with a non-woven fabric called anti-alkaline **ARMATEX ZR** (weight gr. 100/mq approximately).

The fabric **ARMATEX ZR** gives remarkable tensile strength and allows to coat surfaces damaged, degraded, uneven concrete, iron, plastic, ceramic, etc. ..

Is applied to cracks and joints subject to structural movement limited.

SPECIFICATION:

Waterproofing counterthrusting, containment, roofing, etc. .. by the application of cementitious compound flexible / elastic-based vinyl resins treated and armed with tessuto not tessuto anticallino 8PESO GR. 100 SQM).

PACKAGING:

Zetalastic 1: kit containing products for 1 (one) square meters

Zetalastic 3: kit containing products for 3 (three) square meters

Zetalastic for 10 sq m: n. 1 bucket of dust Zetaflex 7.00 kg

n. 1 canister of liquid Zetalattex 15.00 kg

n. 1 roll of fabric Armatex ZR from 10.00 sq m (h. 100 cm)

FULL CYCLE ZETALASTIC

Consumption per 1 sq. m of surface:

Zetaflex about 0.7 kg

Zetalattex about 1.5 kg

Armatex ZR 1.0 m

TOXICOLOGICAL INFORMATION:

Classification Zetaflex dust - consisting of cement: Xi Irritant

Liquid Zetalattex Classification: Not hazardous

Handle with gloves + goggles + dust mask

Transport by land, sea, air: non-hazardous, non-flammable



MEANING OF TERMS USED

Complete cycle Zetalastic: 1° application + fabric + 2° application + 3° application.

Glue for fabric: 1° coat of Zetalastic to adhere the fabric.

Fixative: liquid Zetalattex diluted in 3 parts of water approximately.

Wrinkles: folds that are formed on a smooth surface.

Lumps: small pieces of dough amalgamating (in the shape of balls).

Dough / Zetalastic: micela between powder and liquid Zetaflex Zetalattex (like grout).

Liquid Zetalattex: latex resin vinilicata disperisione treated water (solvent).

Manto Zetalastic: Zetalastic complete cycle.

Hairstyle: passage of the brush on the fabric from the center outwards, esercitando light pressure.

Zetaflex powder: mixture of cement + additives + various aggregates.

Overlaps: fabric edges that are placed on each other to give continuity.

Fabric: armor TNT anti-alkaline 100gr/mq (h. cm. 100).

Volume: (vol.) container / glass intended for use doses of the dough. In the buckets of the "do it yourself with me" are inserted 2 jiggers.

A) Fixative



B) Mixing



C) Presentation to dry and cut fabric



D) 1° application brush and a mixture pose tissue



D) 1° application dough and laying fabric wall



POSA IN

1) Restore the inconsistent parts and thoroughly clean the surface.

2) Put on latex gloves and apply by brush **one coat of primer**. (Photo A)

Serves the fixative: Zetalattex 1 vol. + Water 3 vol. about.

The fixative is used to block the dust and flaky parts of the media.

Apply with brush, roller, watering or rain spray (low pressure) of porous and absorbent materials: plaster, bricks, foundations, concrete slabs, etc. ..

Don't apply on non-porous materials: tiles, paint resin, metal, asphalt, etc. ..

3) **ALLOW TO DRY** (for 30/60 minutes depending on the outside temperature).

4) Prepare and cut the fabric according to the shape of the support. (Photo C)

The size of the pieces of fabric are not important. It is important to overcome the fabric pieces together: at least 1 cm (one) cm and a maximum of 3 (three).

5) **Application of 1 Zetalastic GLUE for the fabric** (Photo D)

Dose: powder Zetaflex 1 vol. + Liquid Zetalattex 1,2 vol. (Photo B) (eg powder 5 vol. 6 + liquid vol., or multiple)

a) Applying the mixture to brush the surface (primed) and immediately place the tissue previously shaped. (Photo D)

b) By the use of the second brush moistened only with water, making a slight pressure, "comb" the fabric applied evenly and without any "wrinkles". (Photo E)

c) As a "comb" the tissue: (Photo E-H)

- From the center upwards and then downwards,
- Centroverso from the outside,
- Finally, on the edges to prevent "wrinkles". (Photo F)

6) lay the other tissues "**overcome**" between them of about 2 cm (Photo G) and "**comb**" from the center outwards. (Photo H)

7) Soak only the overlaps with the mixture Zetalastic (Photo I)

FIELDS OF USE

- Continuous waterproof coating:

flat and sloping roofs, terraces also tiled walls to the north, canals, swimming pools, etc. ..

- Waterproof connector:

joints between different surfaces such as concrete, tile, metal, wood, plastic, etc. ..

- **Waterproof coating for continuous counterforce**, after plugging filtration of water with cement specific CPS + PRIMUR (see brochure cement waterproofing Zetaerre).

- **Fixative dust impregnating to cement surfaces degraded** (including asbestos-cement sheets).

Primer fixative: COV <10 g / l.

STORAGE: (guaranteed for 36 months in original packaging)

How to store any inventories of individual products:

- **Dust Zetaflex:** tightly seal the plastic bag;

- **Liquid Zetalattex:** tighten the cap of the canister;

- **Fabric Armatex ZR:** recover the pieces clean.

Store in a dry place. Sensitive to moisture, frost and high temperatures.

Applicable at temperatures from +5 ° C to +30 ° C.

"Combing" of the fabric (E)



Control board 1 sheet (F)



OPERA

8) ALLOW TO DRY (for 60/90 minutes depending on the outside temperature).

9) 2nd Applying the Zetalastic

Soaking the fabric (Photo L)

Dose: powder 1 vol. + Liquid 1,2 vol. + 0.2 vol water.

(eg powder 5 vol. 6 + liquid vol. + water 1 vol.)

Roll out the dough on a brush across the fabric, preventing sagging.

10) LEAVE DRY (from 2 to about 8 hours depending on the outside temperature).

To speed up the drying of the Zetalastic can also be ventilated with warm air, dehumidify or in basements. Without the evaporation of water the Zetalastic have no effect.

11) 3rd Applying the Zetalastic

FINAL HAND (Photo M)

Dose: powder Zetaflex 1 vol. + Liquid Zetalattex 1,2 vol. (Photo M) (eg powder 5 vol. 6 + liquid vol., Or multiple)

Roll out the dough with a brush over the entire wing surface so as to standardize the waterproofing possibly not perfect, avoiding sagging (Photo M)

12) In the case of joints subject to special structural movements you can double the cycle Zetalastic:

a) finish the first complete cycle of Zetalastic armed;

b) let dry;

c) applying the second cycle of Zetalastic armed.

13) The Zetalastic riprendibile is always in time.

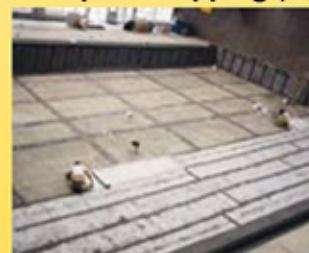
You can lay more strokes years later.

On the mantle Zetalastic you can apply any type of finish: tile adhesive, whitening, shaving, plaster thickness, etc.. provided that the finishes do not contain solvents.

Protection of the waterproofing layer Zetalastic

In case of laying a concrete screed thickness above the Zetalastic, we recommend inserting a layer of dry tissue Armatex ZR between the screed and waterproofing, as a sliding layer.

Laying sheets and subsequent trapping (G)



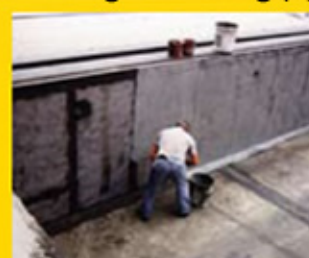
"Combing" of the tissue (H) (from the center toward the outside)



Soaking overlaps (I)



2nd Application dough - Soaking (L)



3rd application mix - the final hand (M)



OTHER USEFUL INFORMATION:

- For a valid waterproofing components of Zetalastic can not be replaced by other materials even if considered "similar".
 - The Zetalastic is always applied with a brush and thin, not cola in the joints, does not apply to "spatula", does not require "strips" prefabricated joints.
 - As for the traditional whitewashing, the areas around the waterproofing must be protected and taped. Any leakage or drops Zetalastic can be cleaned with water.
 - To retrieve the dough is not used in the day, cover the bucket with a plastic sheet. This will also allow to reuse the mixture the next day, after the addition of very little water and new mixing.
- The brushes should be washed with water and then left to soak in clean water.
All equipment should be washed with clean water.

Example of proper waterproofing of a tiled terrace (see "Laying")

Restructuring



1 Application + fabric



- 1) removal of the skirting (if any) and dell'intonaco below;
- 2) repair with mortar joint of loose parts and deteriorated;
- 3) application of the fixative only on the wall behind the skirting, the head of the slab up to the drip tray under the balcony (no fixative on the tiles);
- 4) installation of the complete cycle of Zetalastic: lapel of the skirting, tiles on the floor, head right into the recess of the base of the drip under the balcony.

Skirting



Head insole + drainer



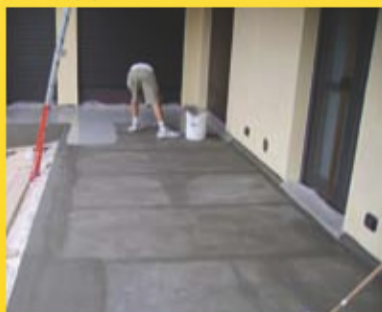
Finishes:

- 5) glue laying of the new skirting and tiles;
- 6) whitening of the head and under balcony with traditional painting water.

2nd Application - soaking



3rd Application - the final hand



Finish - whitening



DIY WITH ME

ZETALASTIC 1 = 1 mq

ZETALASTIC 3 = 3 mq



IMPERMEABILIZZAZIONI ATIPICHE
ZETAERRE
di Luciano Geom. Zanellato

28100 NOVARA (ITALY) - Via G. Banco, 15
Tel. +39 0321 402550 - Fax +39 0321 463646
E-mail: info@zetaerre.com - www.zetaerre.com

